

# March ARES Training

# Introductions

# Agenda

- Upcoming Events
- Action Plan Review
- Field Day Review
- Networks
- Workshop - Winlink

# Upcoming Events

- March 23 - Crossroads 17.75 - Prince William Forest
- May 18 - ARES Training
- June 1 - United Resolve - Winlink
- June 8 - SOWW - Bike Ride
- June 15 - Run Amuck/Belleau Wood
- June 22 & June 23 - Field Day

# Action Plan Review

- <https://www.pwcares.org/>

# FIELD DAY 2019



[www.arrl.org](http://www.arrl.org)

# Basic Info

- Dates/Time:
  - June 22-23, 2019
  - 22/1800Z (22/1400L) to 23/2059Z (23/1659L)
- Bands Available
  - 160, 80, 40, 20, 15, and 10 Meter HF bands, as well as all bands 50 MHz and above
  - 60, 2200, 630, 30, 17, and 12 meter bands are NOT eligible for use in Field Day
- Modes
  - All the Modes!
  - Yes, even FT8
- Rules
  - <http://www.arrl.org/field-day>

# Setup

- Setup can start at 22/1800Z (22/1400) for the full 27 hour period
- Stations setting up before that time can only operate for 24 hours from first transmission
- Where will we setup?

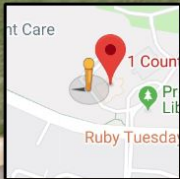


3 County Complex Ct

Woodbridge, Virginia

Google

Street View - Jun 2018



Google



# Setup

- Bring
  - A radio
  - Power source(s)
  - Chairs, tables, canopy, etc.
  - Snacks, coolers, water, etc.
  - Rain gear
  - Any other gear you think you might need
- The cadre does have a HF radio and power supply available to use
  - It will need an antenna and a power source

# The Plan

- Start setting up on Saturday at 2:00pm or earlier
- Finish on Sunday at 2:00pm
- Operate as a “F” Station
  - “F” is for EOCs
  - W4PWC
  - N3FJP Logging Software
- This is a “Fun” Field Day
  - Whatever points we get, we get...
  - An opportunity to test your setup
  - Try something new
  - Get over your “Mic Fright”
  - Practice passing traffic

# Options

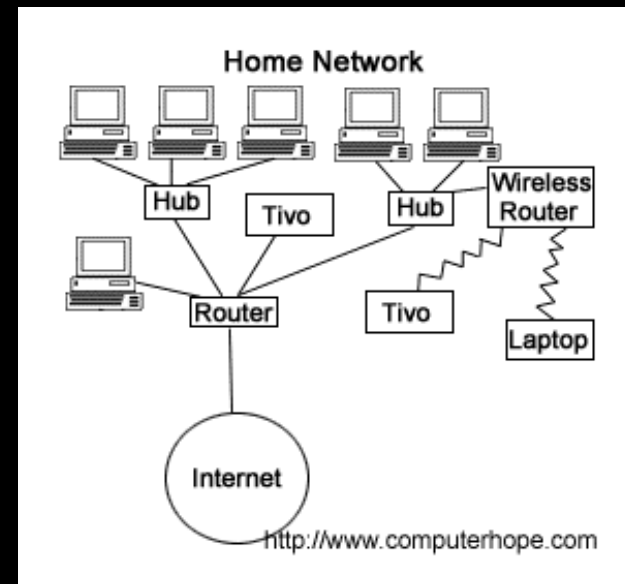
- Can't make the whole timeframe?
  - How about a couple of hours?
  - Help with setup and/or tear down?
- Rent an RV
  - \$360 for three person
  - \$480 for five person
  - \$520 for seven person
  - Place to cool down and/or get out of the elements
- BBQ? Pizza? BBQ Pizza?
- Other ideas

# Contact

- Greg Gresham - KM4CCG
- 214-336-4218
- [ggresham1@gmail.com](mailto:ggresham1@gmail.com)

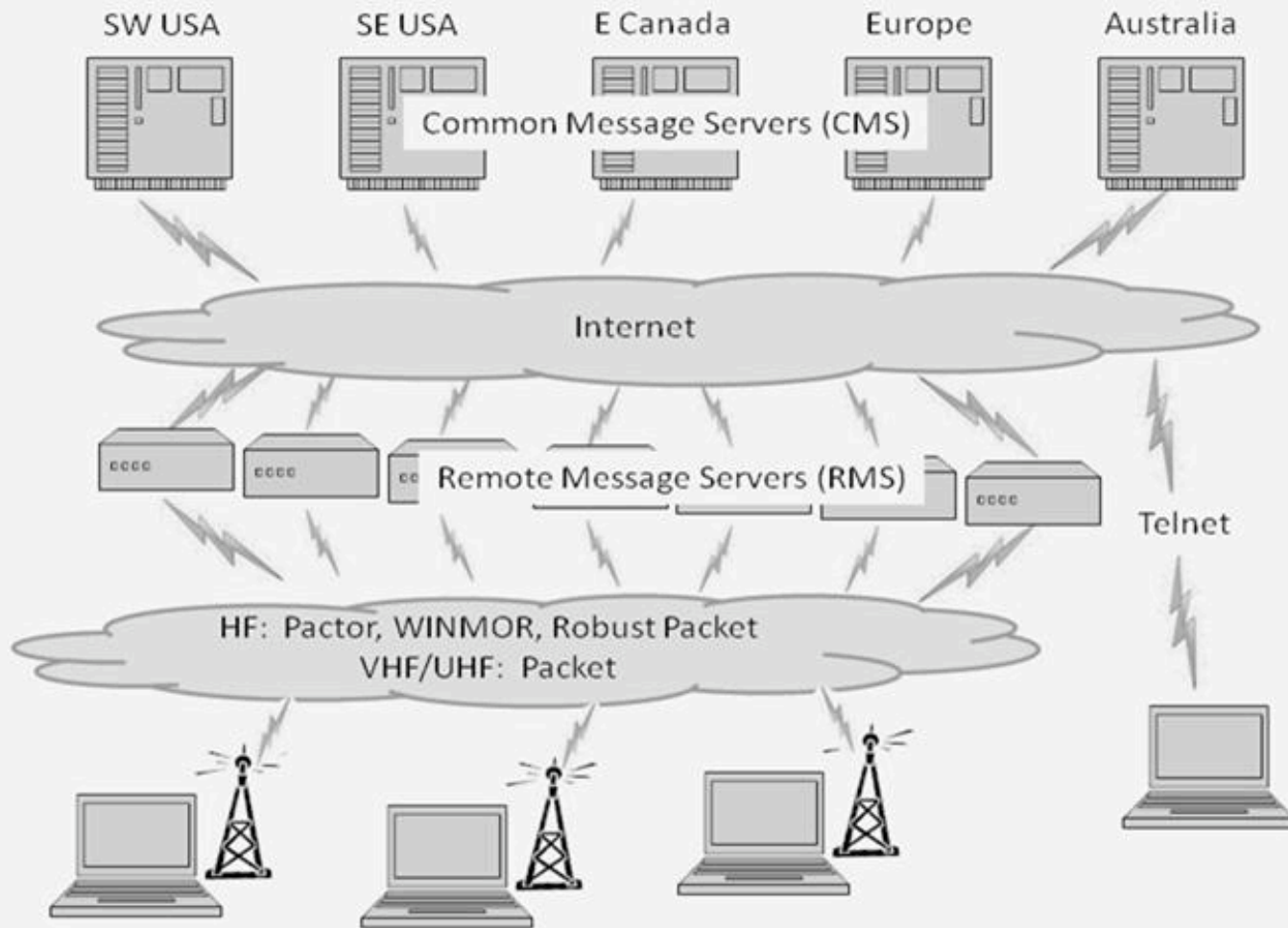
# Networks

- Internet Timeline
  - ARPANet - 1967
  - Public Access - 1995
- Cell Phones



# Networks

- Technological Change
- Cult of Personality



# Winlink

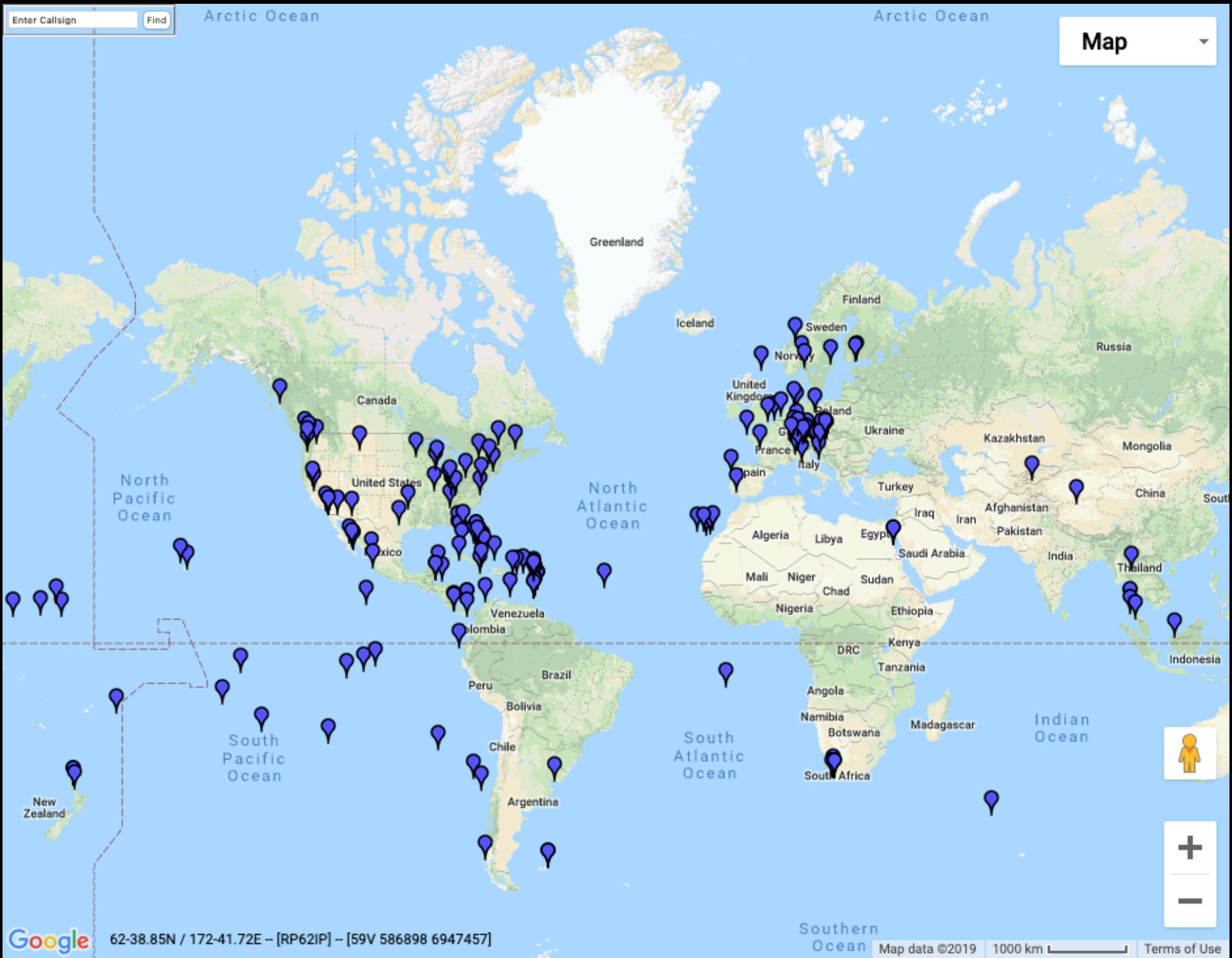


# What It Is

- A system of Common Message Servers (CMS) placed around the world
- The CMS servers connect via the Internet to Radio Message Servers (RMS)
- The RMSs are the RF links to the system (HF, VHF, UHF)

Enter Callsign

Map



62-38.85N / 172-41.72E -- [RP62IP] -- [59V 586898 6947457]

Southern Ocean Map data ©2019 1000 km  Terms of Use

# Software

- Outpost
- Airmail
- Pat
- PackLink (Unix)
- Winlink Express (Recommended)

# Protocols

- **Pactor 3**

Pactor 3 is a superior protocol that has proven itself by reliably sending data over long distances even with weak signals over extremely noisy conditions. Pactor 3 is becoming the standard used by most sailors and emergency organizations for HF contingency communications. Unfortunately, Pactor 3 is a proprietary protocol that requires a specific modem that costs about \$1,400. If you can afford an ocean-going sailboat, or have a provided budget for a radio system, the price of the modem is not bad, but it's out of the budget for most ordinary hams who really don't "need" it for their communications.

- **Pactor 4 -**

The new P4Dragon (DR-7400 and DR-7800) Pactor modems from SCS (<http://www.p4dragon.com/en/Home.html>) provides the Pactor 4 protocol which is twice as fast as Pactor 3. However, the P4Dragon modem is even more expensive than the Pactor 3 modem, and, due to archaic FCC rules, it is not allowed to operator Pactor 4 on ham bands in the USA.

- **Winmore -**

WINMOR was developed by the Winlink Development Team as a low cost alternative to Pactor 3. WINMOR is an open (not proprietary) protocol, and it operates through low cost sound interface equipment such as the Signalink USB™. The tradeoff is that WINMOR is not as reliable or as fast as Pactor 3, but it beats anything else available to the amateur operator.

# Brass Tacks With Winmore

- A Windows computer, preferably Windows 8 or above
- RMS Express client and other goodies
- Signalink, RigBlaster, or Pactor modem
- Associated radio, cables, and other stuff
- More Information: [https://winlink.org/content/getting\\_started\\_winlink\\_and\\_winmor](https://winlink.org/content/getting_started_winlink_and_winmor)

# Local Experts

- Brian, WC4J
- Zach, K4RSU